

Project Fish has a Tail Fin

Car: 1966 Plymouth Barracuda

The vision: turn this into a Trans Am muscle car



Project Fish has a Tail Fin

the Good

2nd owner, car is complete

Repainted original color: '66 Plymouth yellow

Re-chromed bumpers, grill pieces, tail light moldings



Project Fish has a Tail Fin

the BAD

225 Slant six

904 auto transmission

7 ¼ rear end

Drum brakes all around

Single line master cylinder

Small bolt pattern

Manual steering

Single exhaust

>

and the Upgrades

360 V8

904 auto + Gear Vendors

8 ¾ sure grip

Disc brakes

Dual MC

Big bolt pattern

Power steering

Dual exhaust

Project Fish has a Tail Fin - Wheels

Americanracing.com

American Racing Cobra 427 Painted

| Size | Bolt Circle | Backspacing | Min/Max Backspacing | Price |
|----------|-------------|-------------|---------------------|----------|
| 15x8 | Custom | Custom | 2.50 - 4.25 | \$325.95 |
| 15x10 | Custom | Custom | 2.50 - 6.25 | \$325.95 |
| 17x7 | Custom | Custom | 3.25 - 3.50 | \$350.95 |
| 17x8 | Custom | Custom | 3.25 - 4.50 | \$350.95 |
| 17x9 1/2 | Custom | Custom | 3.25 - 6.00 | \$354.95 |
| 17x11 | Custom | Custom | 3.25 - 7.50 | \$363.95 |
| 18x8 | Custom | Custom | 3.25 - 4.50 | \$396.95 |
| 18x9 1/2 | Custom | Custom | 3.25 - 6.00 | \$420.95 |



17 x 10 1/2
w/ Knockoff & Lug Cover

Team III Wheels

www.Team3Wheels.com

AC-III

| Size | Front Side Setting min - max | Back Side Setting min - max | Cast Price |
|----------|------------------------------|-----------------------------|------------|
| 15x7 | 3 3/8 to 4 1/2 | 4 5/8 to 3 1/2 | \$315 |
| 15x8 | 3 3/4 | 5 1/4 | \$255 |
| 15x8 | 3 1/4 to 5 1/2 | 5 3/4 to 3 1/2 | \$320 |
| 15x10 | 4 3/4 to 4 1/2 | 6 1/4 to 6 1/2 | \$265 |
| 15x10 | 3 3/8 to 7 1/2 | 7 5/8 to 3 1/2 | \$335 |
| 15x12 | 3 1/2 to 9 | 9 1/2 to 4 | \$355 |
| 16x7 | call | limited prod | call |
| 16x8 | call | limited prod | call |
| 16x9 1/2 | call | limited prod | call |
| 17x7 | 3 1/2 to 4 1/2 | 4 1/2 to 3 1/2 | \$345 |
| 17x8 | 3 3/4 | 5 1/4 | \$275 |
| 17x8 | 3 1/2 to 5 1/2 | 5 1/2 to 3 1/2 | \$355 |

Project Fish has a Tail Fin - Engine

www.indyheads.com

360 Magnum

\$4,995

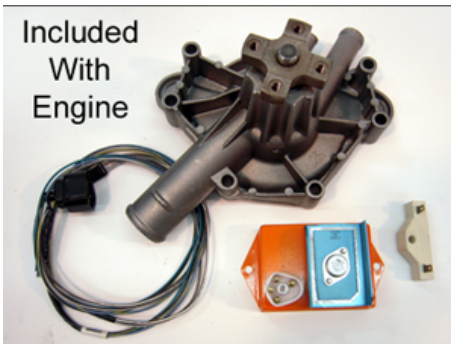


380 Horsepower @5500 RPM
 415 Torque @3200 RPM
 Engine ran with Brad Penn 30wt break in oil
 Fully prepped 360 Magnum block
 4.020 bore – 3.58 stroke
 Eagle SIR rods
 Speed Pro hypereutectic pistons
 9.5:1 compression ratio
 New Indy MA-X cast iron heads
 1.920 / 1.625 – 5/16 stem valves
 Hydraulic roller cam
 .467 / .482—208 / 216—HR113
 MP black Magnum valve covers
 MP M1 single plane intake
 600 CFM Edelbrock carb
 LA timing cover –Mechanical fuel pump OK
 Stock 360 5 quart oil pan
 MP electronic distributor—curve set
 ICH wires—Champion plugs #71-RC12YC
 Engine externally balanced

Engine accessories and upgrades

| | |
|--|-----------|
| 2.02 intake valves (adds 10 HP) | Add \$100 |
| 8 qt deep sump oil pan | Add \$100 |
| Externally balanced B/M flexplate | Add \$82 |
| Flexplate bolt kit 6 flexplate -4 5/16 converter | Add \$30 |
| Flexplate bolt kit 6 flexplate -4 7/16 converter | Add \$30 |
| Mopar dipstick for 5 qt oil pan | Add \$20 |
| Mopar mini starter | Add \$170 |
| Chrome water pump bolt kit | Add \$30 |
| Thermostat housing | Add \$10 |
| Thermostat housing gasket | Add \$3 |

Included
 With
 Engine



Included:
 Orange control box
 Wiring harness-resistor
 MP 8 blade water pump

Project Fish has a Tail Fin – Exhaust Manifold

1992/early '93 factory Magnum cast iron exhaust manifolds

2 1/8" inside diameter, newer models 1 7/8"

53006617 Drivers side

53006618 Passenger side

or 340 passenger side

Due to the narrow engine compartment bay, the driver's side exhaust manifold will have to be a 273 style. Tight clearances will not allow the use of a 340/360 style manifold. The casting number for the 273 LH (driver side) manifold is #2465 847.

Project Fish has a Tail Fin – Motor Mounts



'63-66 A-Body S6 or V8 to 273/318 or 340/360 Replacement or Upgrade Kit A63LA (340/360) - \$144 + \$18 S&H

Exclusive, mounting brackets bolt a 273/318 or 340/360 directly to your Slant 6 or V8 K-member — with no cutting, welding, suspension changes or K-member removal required. Also available for 273/318 replacement or 273/318 to 340/360 upgrades. Powder-coated brackets, factory-style insulators, grade 8 bolts.

Engine-swaps.com/index.html

Schumacher Creative Services

Throttle Cables: '63-66 A-Body

IS-511 ('64-66 A V8) - \$89 + \$13 S&H

These new Throttle Cables are made of premium materials for long life and good looks. Billet stainless ends are fitted to a nylon lined housing, with a stainless steel inner member and clevis. Special lengths and custom ends available by special order.

'63-66 A-Body Torque Strap

TQ63A* - \$79 + \$15 S&H

Throw away your chains and broken motor mounts; our new torque strap can handle all the upgraded power and excess vibration your A-Body small block engine can dish out. Mounts in existing sway bar location on some models.

Project Fish has a Tail Fin – /6 to SB swap notes

On '63-66 Slant 6 models, need to change the steering centerlink to the V8 style. This will add more oil pan clearance. Any V8 centerlink from a 64-72 A-body will interchange. You can identify the centerlink visually; the Slant 6 centerlink will appear to be straight, while the V8 style has a drop of approximately 1 ¾”.

Due to the difference in location of the coil and distributor in A engine and Slant 6 models, your wiring will have to be fabricated (shortened). Now is a great time to change to the MP electronic ignition system.

Radiator compatibility . Choose one with its outlet and inlet on the same side as the mating connections on the engine. Stay with a V8 A-body model. For more efficient cooling we recommend a shroud and the Mopar Performance viscous fan package.

A MP high flow motor home thermostat is recommended. They come in 160/180 or 195 styles.

There may be interference with your stock transmission kick-down linkage. These can be mixed & matched from different models to achieve the correct geometry, or you may have to change to a cable shift system.

In any high performance and/or racing situation, a torque strap or driver side solid mount is recommended.

Project Fish has a Tail Fin – /6 to SB swap notes

318 TORSION BARS, FOR THE ADDED 120 POUNDS, FOR THE V8

A V8 ENGINE WIRING HARNESS (YEAR-ONE)

A SMALL BLOCK TRANNY CROSS-MEMBER (Donor Car)

USE STOCK KICK-DOWN ASSEMBLY, FROM THE DONOR CAR, if there isn't one of the car,
BOUCHILLON PERFORMANCE SELLS A GREAT CABLE KICKDOWN ASSEMBLY FOR ALL REAR WHEEL
DRIVE MOPARS, EITHER SLANT SIX ALL THE WAY UP TO THE 440 & HEMI 1-800-962-1268
www.bouchillonperformance.com PLEASE DON'T EVER RUN A TORQUEFLITE TRANNY WITHOUT
THE KICKDOWN LINKAGE

Project Fish has a Tail Fin - Transmission



HURST V-Matic 2 Dual Mode shifter
Jegs.com \$219.99

Project Fish has a Tail Fin - Transmission

GEAR VENDORS

\$2795

Part #3DFS904A

Automatic 3-Speed **904**.
Replaces 15" Tailhousing.
60's and 70's muscle cars and street rods.



TORQUEFLITE A904 3-SPEED AUTOMATIC (4 and 6 Cylinder Applications)

| | | | Axle | Ratio | | |
|-----------------|-------------|-------|-------|-------|-------|------|
| | | 4.10 | 3.90 | 3.73 | 3.55 | 3.23 |
| | Trans Ratio | | Final | Drive | Ratio | |
| 1 st | 2.70 | 11.07 | 10.53 | 10.07 | 9.58 | 8.72 |
| Over | 2.10 | 8.61 | 8.19 | 7.83 | 7.45 | 6.78 |
| 2 nd | 1.54 | 6.31 | 6.00 | 5.74 | 5.46 | 4.97 |
| Over | 1.26 | 5.16 | 4.91 | 4.70 | 4.47 | 4.07 |
| 3 rd | 1.00 | 4.10 | 3.90 | 3.73 | 3.55 | 3.23 |
| Over | 0.78 | 3.20 | 3.04 | 2.90 | 2.77 | 2.52 |

TORQUEFLITE A727/A904 3-SPEED AUTOMATIC

| | | | Axle | Ratio | | | |
|-----------------|-------------|-------|-------|-------|-------|------|------|
| | | 4.56 | 4.10 | 3.73 | 3.55 | 3.23 | 3.08 |
| | Trans Ratio | | Final | Drive | Ratio | | |
| 1 st | 2.45 | 11.17 | 10.05 | 9.14 | 8.70 | 7.91 | 7.55 |
| Over | 1.91 | 8.71 | 7.84 | 7.13 | 6.78 | 6.17 | 5.89 |
| 2 nd | 1.45 | 6.61 | 5.95 | 5.41 | 5.15 | 4.68 | 4.47 |
| Over | 1.14 | 5.16 | 4.64 | 4.22 | 4.01 | 3.65 | 3.49 |
| 3 rd | 1.00 | 4.56 | 4.10 | 3.73 | 3.55 | 3.23 | 3.08 |
| Over | 0.78 | 3.56 | 3.20 | 2.91 | 2.77 | 2.52 | 2.40 |

Project Fish has a Tail Fin - Transmission

bouchillonperformance.com

BPE3350

Torqueflite Kickdown Cable Kit

This patented kit will give you the proper throttle pressure your transmission requires, correct shift points, versatile installation combinations, and provide longevity to your Torqueflite.

Price: **\$127.22**

BPE3395 Accelerator Cable Bracket Is A Fully Adjustable Bracket That Can Be Adjusted To Fit Any Application

New 4 barrel Accelerator Cable Bracket that works on all single 4 barrel & 2 x 4 barrels found on Mopar 6 cylinders, A-engines, B/RB engines and Hemi's. Height of the intake manifold or placement of carburetor does not effect installation. The length of your accelerator cable will be the only limit you have. Works as a great compliment to our Kickdown Cable Kit (#3350). It cleans up the intake manifold area of your engine.

Price: **\$29.80**



Project Fish has a Tail Fin – Rear End

Strangeengineering.net

Hi-Performance Street – S60 housing (no mounts), housing ends, **Strange Alloy 35-** spline axles, ½” studs, axle bearings, Trac-Lok posi-unit, standard gear set, U1600 pinion yoke (1350), steel cover, breather vent, filler & drain plug. Complete rearend fully set-up.

Only \$1,829, with Leaf Spring mounts installed (Bolt-in Mopar) – **only \$1,895**

Strange offers the S60 with OEM dimensions or we can narrow the rearend at no additional cost.



Project Fish has a Tail Fin – Rear End

Moserengineering.com

8 3/4 Mopar Complete Built to Order
Stamped Housing & Axle Package Part
Number Configurator

Packages start at \$1,165



MO875 Mopar Complete Built to Order
Fabricated Housing & Axle Package Part
Number Configurator

Packages start at \$1,070



Project Fish has a Tail Fin – Torsion Bars/Springs

Leaf Spring rate complement (but not quite equal) the torsion bars

P-s-t.com

Torsion Bars

| Body | Diam | Rate | Application | Per pair |
|------|-------|------|---|----------|
| A | 0.89" | 120# | Restoration for 383 cars, improved small block handling | \$389 |
| A | 0.92" | | Performance handling, Solo racing | \$389 |

A-Body torsion bar 35 3/4"

Leaf Spring Relocation Kits – move leaf springs inboard 3" per side for added tire clearance. Kits mount longitudinally and require welding. Included in kit are front hangers, shackles, rear shackle mounts, spring mounting seats and frame boxes.

A-Body 1964-76 \$139 (sale \$99)

Leaf Springs

| Plymouth | Year | Original Replacement Stock Height/pair | High Performance 1" Lowered/pair |
|----------|---------|--|----------------------------------|
| A Body | 1964-76 | \$349 | \$399 |

Project Fish has a Tail Fin – Torsion Bars



.890

Auto Part Number P5249150 From Mopar Performance

Brand: [Mopar Performance](#), Mfr Part#: P5249150

Lowest Price \$328.90

Product Details

Mopar Performance P5249150 Torsion Bar Sets

.920

Auto Part Number P5249151 From Mopar Performance

Brand: [Mopar Performance](#), Mfr Part#: P5249151

Lowest Price \$332.90

Product Details

Mopar Performance P5249151 Torsion Bar Sets

Summit Racing Equipment

JEGS High Performance

Project Fish has a Tail Fin – Torsion Bars



firmfeel.com

.880 DIA. Street/Strip App. (WR 115)

TBA2.....\$315

.940 DIA. Stock HP/Police App. (WR 155)

TBA3.....\$315

(Wheel Rate abbreviated WR)

Project Fish has a Tail Fin – K Frame

firmfeel.com



Reinforced K Frames

'62-'76

KFA.....\$450

Powder Coat (Black)

PCKF1.....\$125

Reinforced K-frames

Your K-frame: hot tanked, sand blasted and checked for straightness. The factory welds are rewelded, and we weld the seam all around. The steering box mount is boxed, gusseted. L.C.A. pin reinforcement plates are welded in. Reinforcement plates are added to the strut mounts. K-frames are then de-burred, cleaned up, and ready for paint.

Project Fish has a Tail Fin – Front Sway Bar



p-s-t.com

Sway Bar, Front

SKU: SWAY 751

\$169.00

Sway Bar Type: Solid

Adjustable: No

Sway Bar Diameter (in): 1 1/8

Mounting Hardware Included

Project Fish has a Tail Fin – Front Sway Bar

firmfeel.com

Front Tubular Sway Bars

FFI builds tubular sway bar kits in house. The difference is in the weight and quality of the bar material and the hardware.

Compared with our solid 1-1/4 swaybars (~21.5 lbs.), the tubular swaybars reduce the weight by 9 pounds (~12.5 lbs.).

The brackets fit well and are built heavy duty to handle the higher stress created by higher rate sway bars. All of our sway bars are powder coated black and have urethane bushings fit with zerk fittings.



Front Tubular Sway Bars

'62-'66 Front: 1-1/4" DIA.
SBTA1.....\$335

'67-'72 Front: 1-1/4" DIA.
SBTA3.....\$335

'73-'76 Front: 1-1/4" DIA.
SBTA5.....\$335

*Will require rear-mounted calipers when using later disc brake conversions on '62-'72 cars.

For cars without Factory sway bar brackets add \$24 for LCA brackets.

This alternative kit will clear front-mounted calipers when using later disc brake conversions on '62-'72 cars.

Project Fish has a Tail Fin – Steering Box

firmfeel.com

Power Steering Box

All FFI Power Steering boxes are thoroughly cleaned and inspected: the cases are machined for roller bearing sector supports, and the worm gear assemblies are resized. The box is then fitted with Firm Feel's exclusive reaction springs, ranging in three steps from slightly firmer than the OE police box to two steps firmer yet, depending on your needs. All boxes are bench tested and shipped ready to install.



Stages I, II, III (Rebuilds)

PSB1.....\$329

PSB2.....\$329

PSB3.....\$329

Steering Core Charge

PSC.....\$175

Powder Coat (Black)

PC.....\$125

Pot Connector Kit

PK0.....\$25

High/Low Pressure Hose

PSBPH

Project Fish has a Tail Fin – Steering Box

Power Steering Pump

All FFI Power Steering Pumps are thoroughly cleaned, inspected, and shipped ready to install.

Steering Core Charge

PSPC.....\$75



FFI Rebuilds

(Saginaw)

PSP1.....\$150

(Thompson)

PSP2.....\$175

(Federal)

PSP3.....\$175

Project Fish has a Tail Fin – Steering Box Support, Idler Arm

firmfeel.com



Sector Support Kit

SSK.....\$135

Reduces steering box flex on k-frame.

Article Showcase SSK [Dec. 2011: Mopar Action](#)
“Prime Steer”



Idler Arm Kit 1

IAK1.....\$185

Roller bearing idler arm kit '62-'67 A/B Body.

Fits O.E. idler arms. Does not fit some after market idler arms.
Call for details.

Article showcase IAK1 [Feb. 2012: Mopar Action](#)
“Precision Provision”

Project Fish has a Tail Fin – Upper Control Arm

*Generic photo -
actual part may vary*



p-s-t.com

Tubular Front Control Arms

SKU: TUB MOPA

\$349.00

Adjustable: No

Hardware Included: No

Control Arm Material: Steel

Control Arm Finish: Powder Coated

Bushing Included: Yes

Bushing Material: Delrin

DESCRIPTION

Lowered Mopars suffer from lack of suspension adjustability. All available caster is lost in order to get camber back to spec, causing instability at high speeds. **PST's** brand new **G-Max® Tubular Upper Control Arms** solve these geometry issues by relocating the ball joint, regaining your adjustability and improving your cornering. Make your Mopar handle like a modern exotic - ***order today!***

Features:

TIG-welded, DOM seamless tubing

- Greater ball joint contact surface
- Improved caster/camber adjustment
- Pre-assembled w/**Delrin®** bushings and new ball joints

Project Fish has a Tail Fin – Upper Control Arm

firmfeel.com



**1973-76 "Large Ball Joint"
w/ Bushings and Bump Stops**

UCAA2.....\$350

w/ Purchase of Suspension Kit

UCAA2P.....\$299

Tubular Upper Control Arm

All arms are jig built, heli-arc welded and powder coated. They come with ball joints, rubber or urethane inner bushings, and bump stops. We build in extra positive caster for improved stability. A Firm Feel power box and a set of these arms will dramatically improve the way your car drives. Can be used with short or tall spindles.

If you want to add front disc brakes you can use the '73 up disc brake spindle with the large ball joint tubular upper control arms on '60 - '72 A body cars

Project Fish has a Tail Fin – Lower Control Arm

firmfeel.com



Reinforced Lower Control Arms

LCAs are cleaned, sand blasted, and reinforcement plates are welded on.

Reinforced Lower Control Arms

LCAA.....\$200

Urethane Bushings

LCAB10.....\$35

Greasable Pivot Pins

LCAPS1.....\$100

Nylon Bushings

LCAB40.....\$50

Rubber Bushings

LCAB30.....\$40

HD Pivot Pins

LCAPS2.....\$85

R&R Rubber Bushings

LCAB50.....\$50

Project Fish has a Tail Fin – Upper/Lower Control Arm

QA1.net

\$349.95 Upper Control Arms for Mopar Early A-Body

\$449.95 Lower Control Arms for Mopar A-Body



Upper Control Arms

Ready to bolt on control arm sets for your Mopar. They feature tubular construction, black powder coat and polyurethane inner pivot bushings. These upper control arms increase caster by approximately 3 degrees. Each set comes with ball joints.

Note: Part #52301 is only for factory cars and any A-Body that was swapped to disc brakes with factory parts (large ball joint).

Lower Control Arms

QA1 offers Mopar A, B and E-Body Control Arms with sway bar tabs. A direct bolt-in on your factory K-Member, these lower control arms are twice as strong as factory arms and save you 8 pounds! The set includes bushings, pivot arms and nuts for ease of installation.

Note: Part #52307 is designed to work with the 1964-1966 A-Body with no sway bar and the 1967-1973 A-Body with the 1973-1976 sway bar or "flat bar."

Part #52308 is designed to work with the E-Body sway bar and the 1970 and up B-Body sway bar.

Each kit comes with 1 left control arm and 1 right control arm.



Project Fish has a Tail Fin – Front Spindle



p-s-t.com

2" Drop Spindle

SKU: DS MOP621

\$489.00

Ride Height: Lowered

Amount of drop (in): 2

Spindle Material: Ductile Iron

Spindle Finish: Raw

Hardware Included: No

Project Fish has a Tail Fin – Front Brakes



Generic photo – actual part may vary

p-s-t.com

Front Brake Conversion Kit

SKU: DBK WIL731

\$1,199.00

DESCRIPTION

Complete Wilwood Disc Brake Conversion Kits for PST 2" Drop Spindles

Supercharge your braking with one simple, easy-to-install kit! **PST** has partnered with Wilwood to offer the most complete disc brake kit on the market. Use this kit in conjunction with **PST's 2" Drop Spindles** and the installation is 100% bolt on with no drilling, cutting, or grinding required! **Wilwood's Pro Series**, high performance **Front Disc Brake Kit** offers increased stopping power and cooling while reducing unsprung and rotating weight by up to 35 lbs. Best of all, this 4-piston caliper kit works with most 15" wheels!

Each kit includes:

- **Dynalite Forged Aluminum racing calipers** with four 1 3/4" stainless steel pistons
- 10 3/4" **Drilled and Slotted rotors**
- **Aluminum** hubs with bearings, seals and studs
- High Performance brake pads
- Billet **Aluminum** caliper mounting brackets
- **Wilwood 1" bore, tandem Aluminum** Master Cylinder
- Adjustable proportioning valve
- Master cylinder adapter plate
- Steel braided brake lines (from caliper to stock hard lines)
- Hardware

Project Fish has a Tail Fin – Disc Brakes



Generic photo – actual part may vary

p-s-t.com

Four Wheel Disc Brake Conversion Kit

SKU: DBK MDC46DC, DBK MDC46SD

\$1,549.00 power brakes, \$1,449 manual brakes

DESCRIPTION

Includes upper control arms and upper and lower ball joints. Upgrades bolt pattern to 5" X 4.5". Must use 5" X 4.5" wheels.

The solution for performance musclecar owners - **PST's** Disc Brake Conversion Kits. You have always relied on **PST** to provide you with top quality, complete, easy to install performance products for your musclecar. Our kits are just what you've been asking for! These kits are the most complete available and include virtually everything to do the conversion in one convenient package. Order today from **PST, The Musclecar Performance Specialists!**

Front Kits Include:

- 11" Rotors (5x4.5)
- Single Piston Cast Iron Calipers
- Spindles
- Power Brake Booster
- Cast Iron Master Cylinder
- Adjustable Proportioning Valve
- Brake Pads
- Caliper Brackets
- Backing Plates
- Hoses
- Bearings
- Seals
- Dust Caps
- Spindle Nuts & Washers
- All Hardware
- **Must use 15" or Larger Wheels**

Rear Kits Include:

- 11" Rotors (5x4.5)
- Single Piston Calipers
- Brake Pads
- Caliper Brackets
- Flex Hoses & Brackets
- Emergency Brake Cables
- Installation Hardware
- **Must use 15" or Larger Wheels**

Project Fish has a Tail Fin – Flip-top fuel cap



Yearone.com
\$135.99

Part Number: BN157S

Flip-top fuel cap, 1969 Barracuda, cap and trim ring.

Flip-top fuel cap-Each cap features chrome plating with the correctly detailed appearance, spring-tensioned openings, and the high-quality rubber seals.

This chrome-plated cap and has a rough textured black center with raised "FUEL" lettering. Mounting hardware not included.

2008 Dodge Challenger flip fuel cap



Pgclassic.com
\$95

1969 Barracuda 1969-70 Charger Flip-Top Fuel Cap kit



Project Fish has a Tail Fin – Chrome exhaust tip



Yearone.com
\$159.99

Part Number: GC689

Exhaust tip pair for 1968-1969 Barracuda models.

Correct chrome finish. These have a 1-5/8" i.d. and are sold as a matched pair. These are the closest reproductions available for 1970 Dart models. Although they sit a little higher than the originals, it's not noticeable once they're installed. Reproduction.

NOTE: They will also fit 1971-1973 Dart Swinger and Valiant models, although these cars didn't use chrome tips originally. These are not correct for 1967 models equipped with high-performance single exhaust, or 383 models that used dual exhaust without tips, however they will fit.



\$149.99

Part Number: DCE440P

Chrome exhaust tip pair, fits 1968-1970 Charger models, reproduction.

Chrome exhaust tip pair-These exhaust tips have a 2" i.d. Sold as a pair.

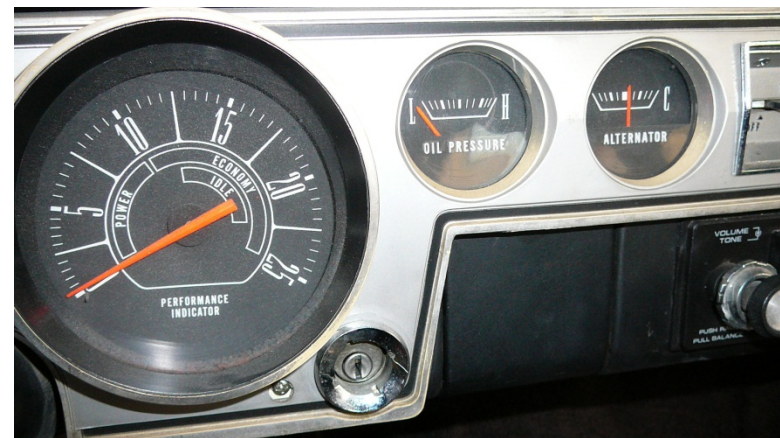
Project Fish has a Tail Fin – Gauges

www.autometer.com

\$894

5" Speedo & Tach

2 1/16" instrument gauges



Project Fish has a Tail Fin – Gauges

www.autometer.com

\$924



Project Fish has a Tail Fin – Seats

PROCAR
Elite



Sportsman



Evolution



Project Fish has a Tail Fin – Seats

Procar Elite Seat (left) Black Vinyl
Procar Elite Seat (right)
Bracket Barracuda 65-69 Driver
Bracket Barracuda 65-69 Passenger

80-1100-51L
80-1100-51R
81340
81341



Cerullo.com
XR Sport Seat



Corbeau.com
LG1
Cloth: \$399.00
Suede: \$479.00
Black Leather: \$625.00

Project Fish has a Tail Fin – Design Model



Project Fish has a Tail Fin – Design Model



Add Chrome flip
top fuel filler -
like '67 and up
'Cuda



Project Fish has a Tail Fin – Design Model



Fastback slope
and angle of
spoiler similar to
'70 Camaro



Project Fish has a Tail Fin – Design Model



Project Fish has a Tail Fin – Design Model



Two stripe pattern like the fastback Mustang Shelby Cobra and new Challenger



Project Fish has a Tail Fin – Design Model



Project Fish has a Tail Fin – Design Model



Project Fish has a Tail Fin – Design Model



Center grill black, not body color. Width of stripes flow down to center grill.

Project Fish has a Tail Fin – Design Model



Project Fish has a Tail Fin – Design Model



2009 Challenger front buckets w/o head rests and Momo steering wheel

Project Fish has a Tail Fin – Design Model



Project Fish has a Tail Fin – Design Model



Project Fish has a Tail Fin – Design Model



The stripes help to make the tail fin stand out

Project Fish has a Tail Fin – Design Model



Project Fish has a Tail Fin – Design Model



Spoiler gives the rear a
GT or Trans Am look
like the '70 Camaro



Project Fish has a Tail Fin – Design Model



Project Fish has a Tail Fin – Design Model



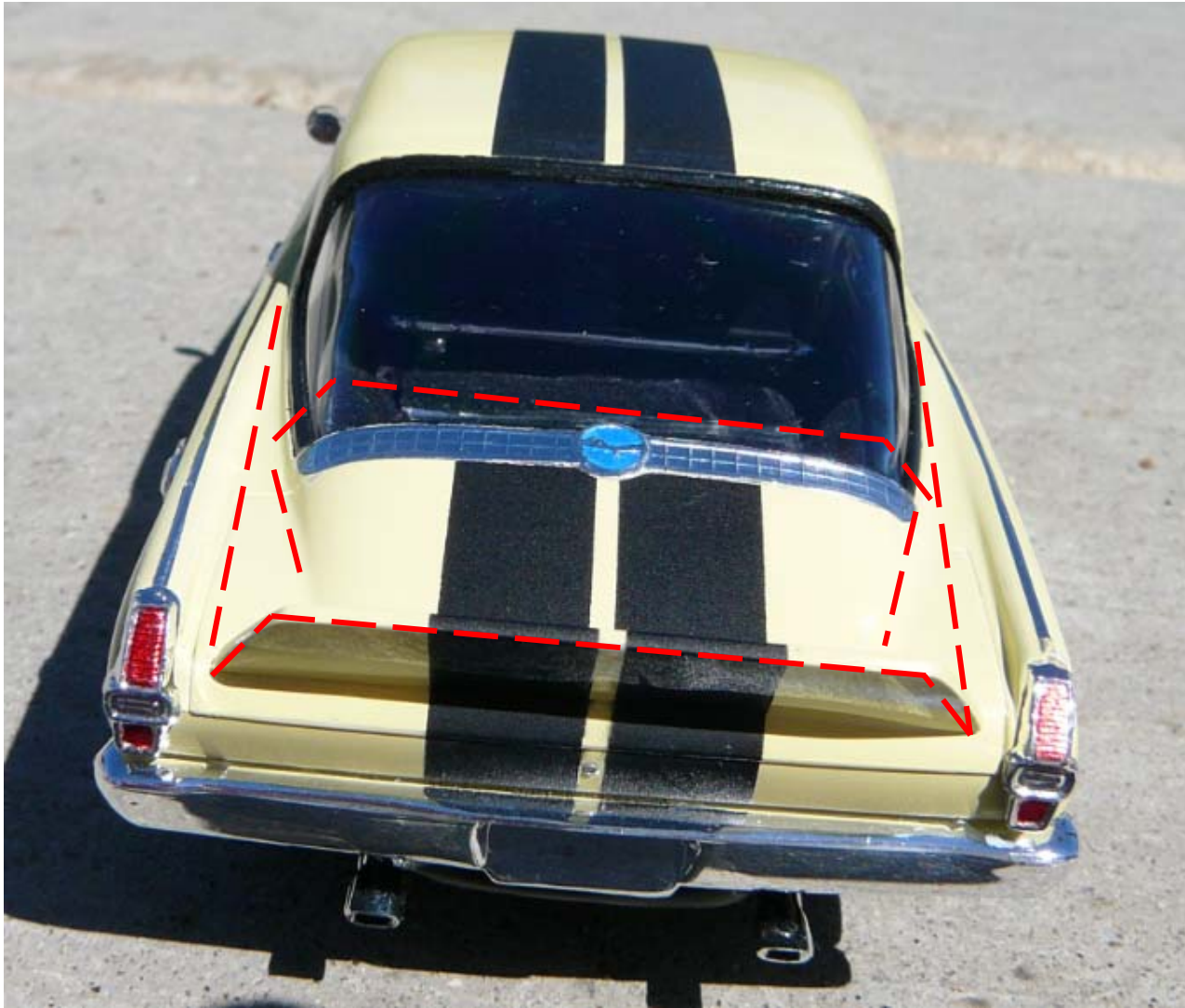
Rear deck lid is still fully operational with tail fin

Project Fish has a Tail Fin – Design Model



Side channels
visible down
sightline

Project Fish has a Tail Fin – Design Model



Shape of tail fin follows contour of body shape