

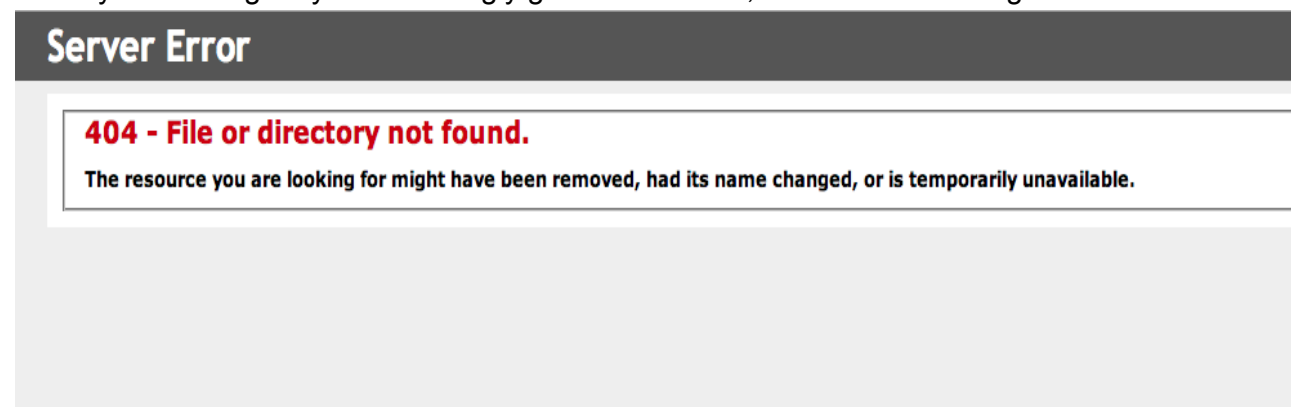
## ADFS Single LogOut Workaround

TL;DR

ADFS logout is broken since we started implementing the signed logout. This document un-breaks that.

BAD:

When you click logout you are lovingly greeted with this, or a similar message:



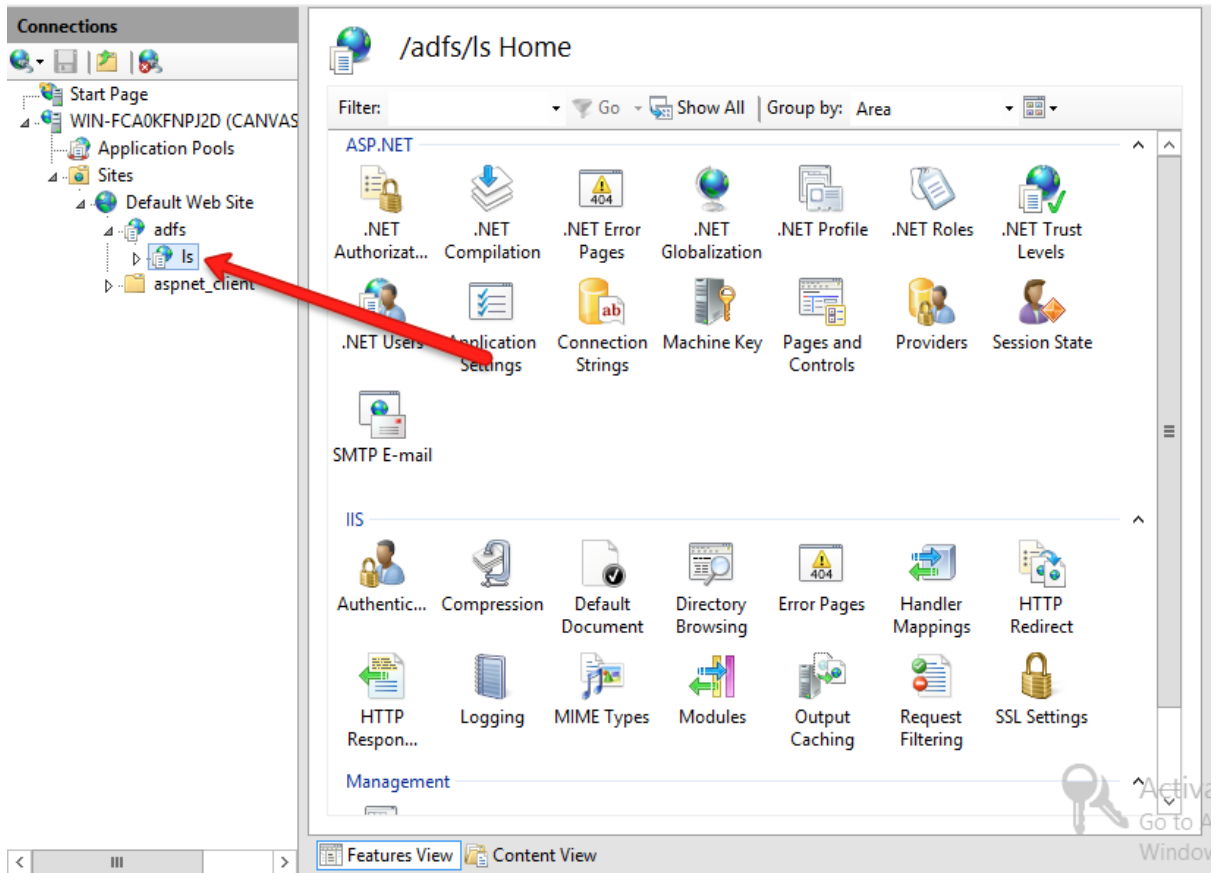
Yes, but what does it all mean? Why was it working before and not working now? Long story short, the addition of the SAMLRequest logout parameter has broken ADFS's ability to actually log a user out, or at least at first glance. But this error is not an ADFS error, it is an IIS page error. Look Blue, a clue!

How do we fix this?

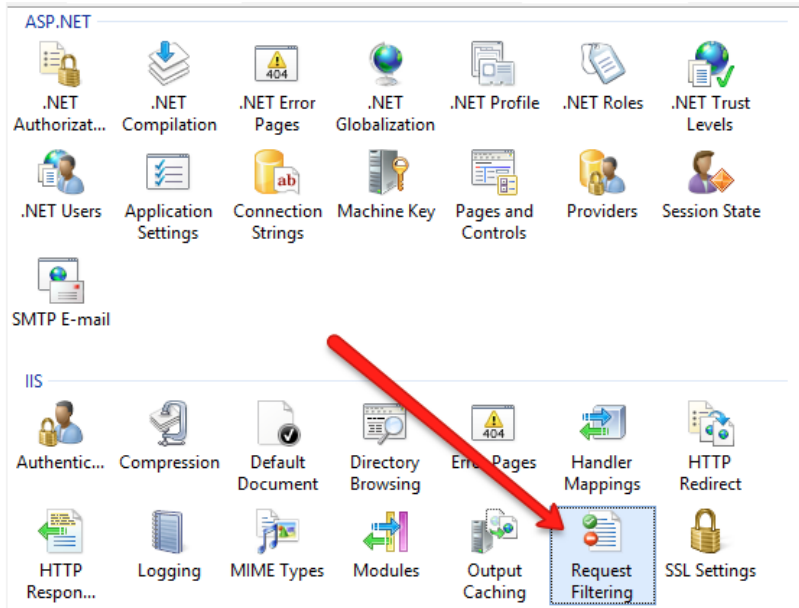
Well the real issue here is the length of the query string parameter in the SAMLRequest logout. Look [here](#) for the real tech jargon. But the fix is fairly simple. Force IIS to allow a specific query string parameter.

Here's how:

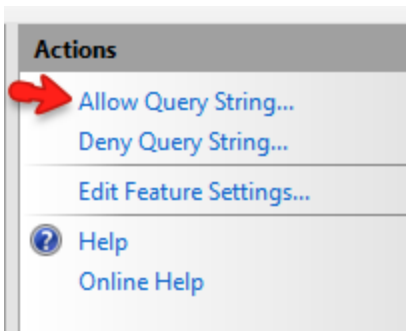
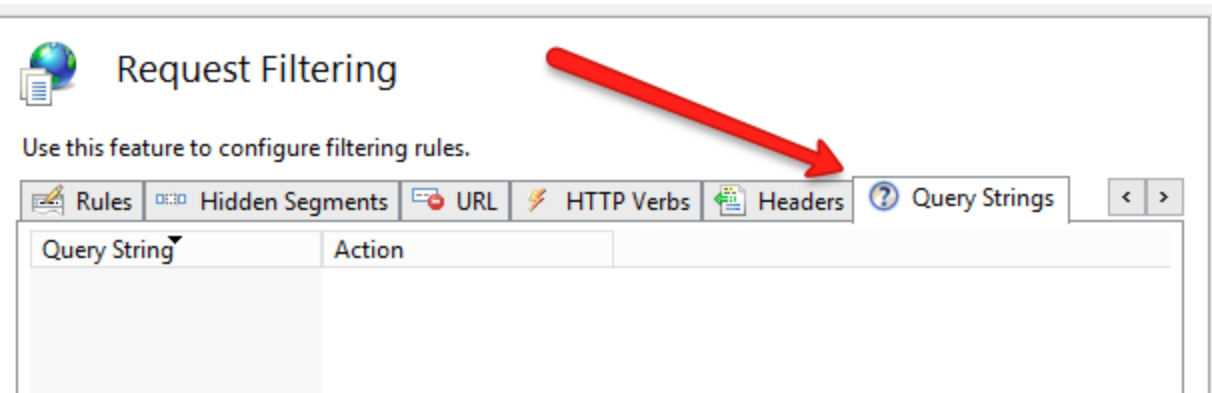
1. Open up your IIS Manager
2. On the left side, find the adfs/ls directory



3. Now select "Request Filtering"

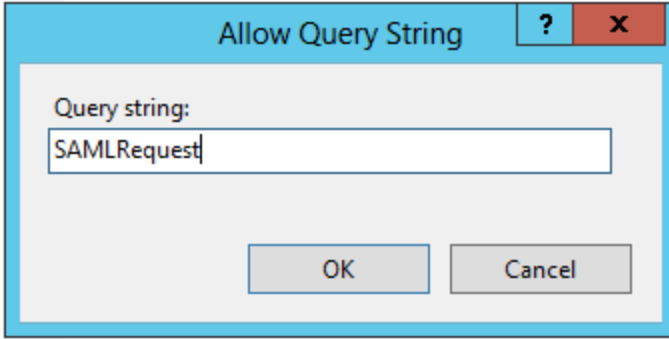


4. Now select Query Strings

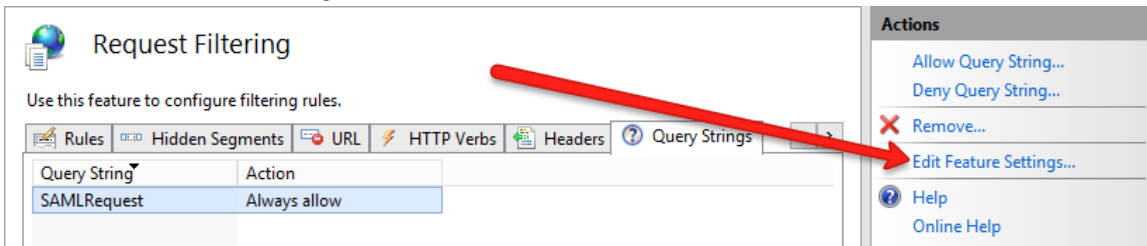


5. Click Allow Query String

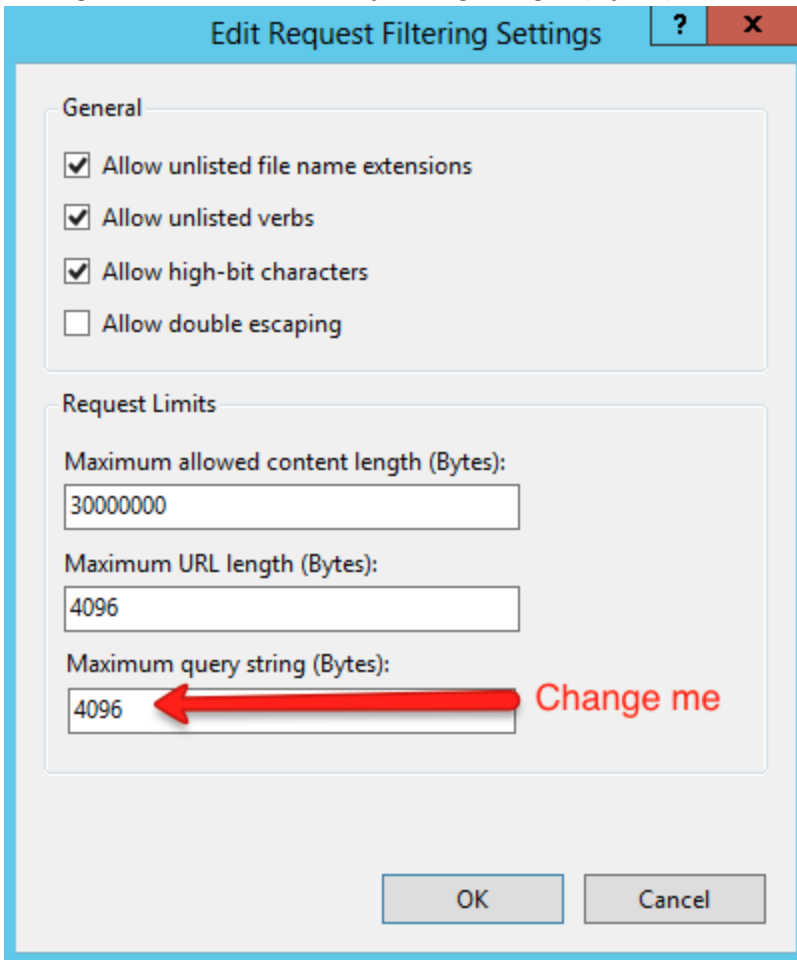
6. Now Add in a new Query String called "SAMLRequest"



7. Now Edit Feature Settings



8. Change the Maximum Query String Length (Bytes) to 4096



9. Profit! NOTE: you may need to restart the adfs/ls IIS web pages to get the changes to

work.